

York's City Walls – Tower 39

(Near Fishergate Postern Tower)

Tower 39 (NG 60695125. Pl. 49; Fig. next) is of one build with the adjacent 14th-century curtain wall but has been modified in the later Middle Ages. It is rectangular and so placed that the S.E. side is parallel to the wall running to Fishergate Bar and the S.W. side to that towards Fishergate Postern. There is a stepped plinth, on the S.W. as much as 5½ ft. above the exposed footings, continuing that on the adjacent wall and neat ashlar facing up to 10 ft. high above it. In the centre of the S.E. and S.W. sides are equal-armed cruciform arrow slits of 15th-century form, and in the N.E. side is a slit with no cross arms.

The inside, reached through a doorway with a three-centred head in the N.W. wall, has a main room and an alcove to the S.W. The room has a fireplace blocking the slit in the N.E. wall. The walls are of stone with some masons' marks and there was a small recess, now bricked up, opposite the entrance. The alcove, separated from the main room by a stone lintel, has a splayed opening to the S.W. arrow slit. The two parts are roofed with separate brick vaults. There are at least three phases of building in this tower, to the last of which, in the 17th century after the Civil War, belong the blocking of two arrow slits, the fireplace, and the vaults.

Citation – British History On-line

'The Walmgate Area', in *An Inventory of the Historical Monuments in City of York*, Volume 2, the Defences (London, 1972), pp. 139-159

<http://www.british-history.ac.uk/rchme/york/vol2/pp139-159>

[accessed on 16 August 2015].

Tower 39

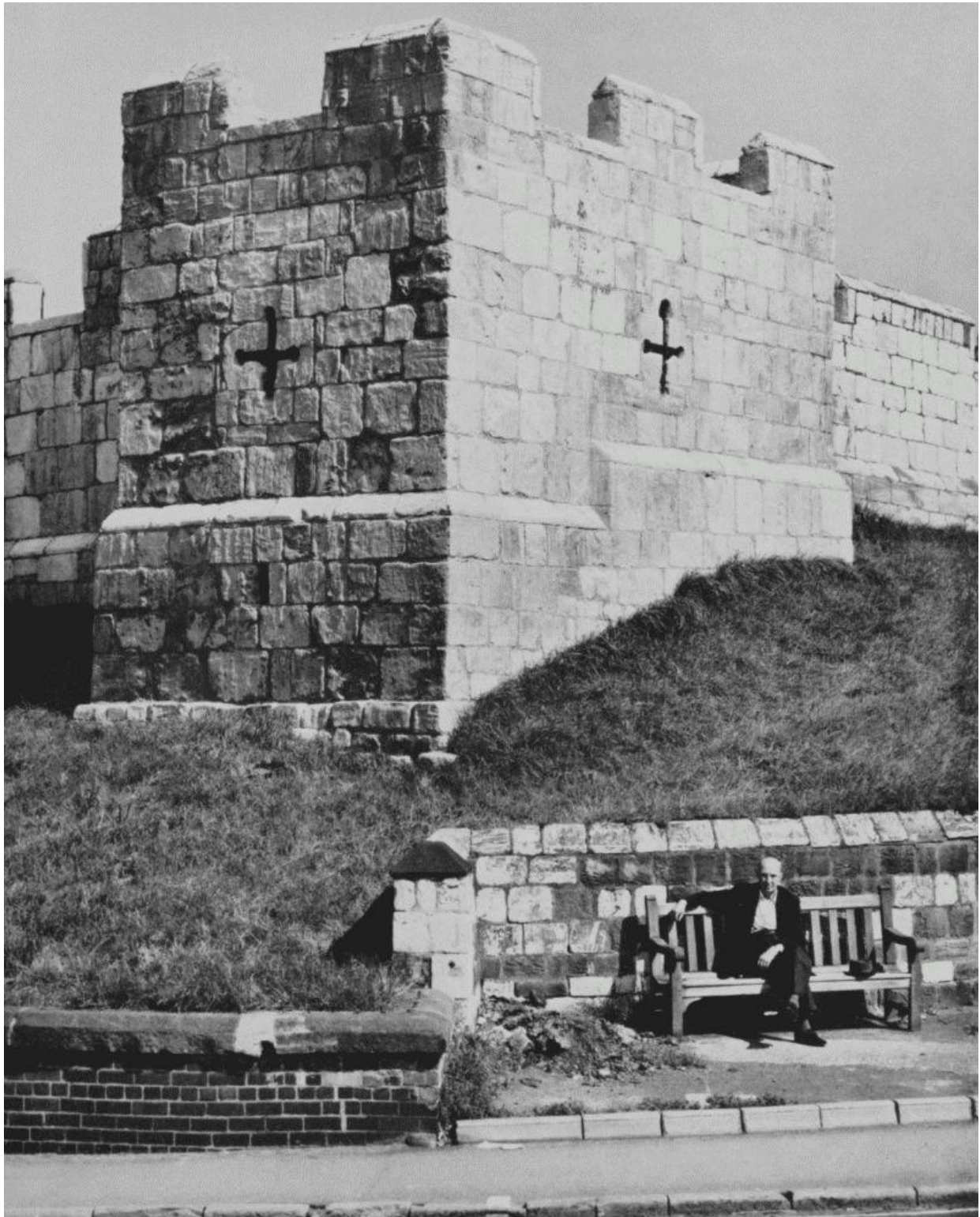
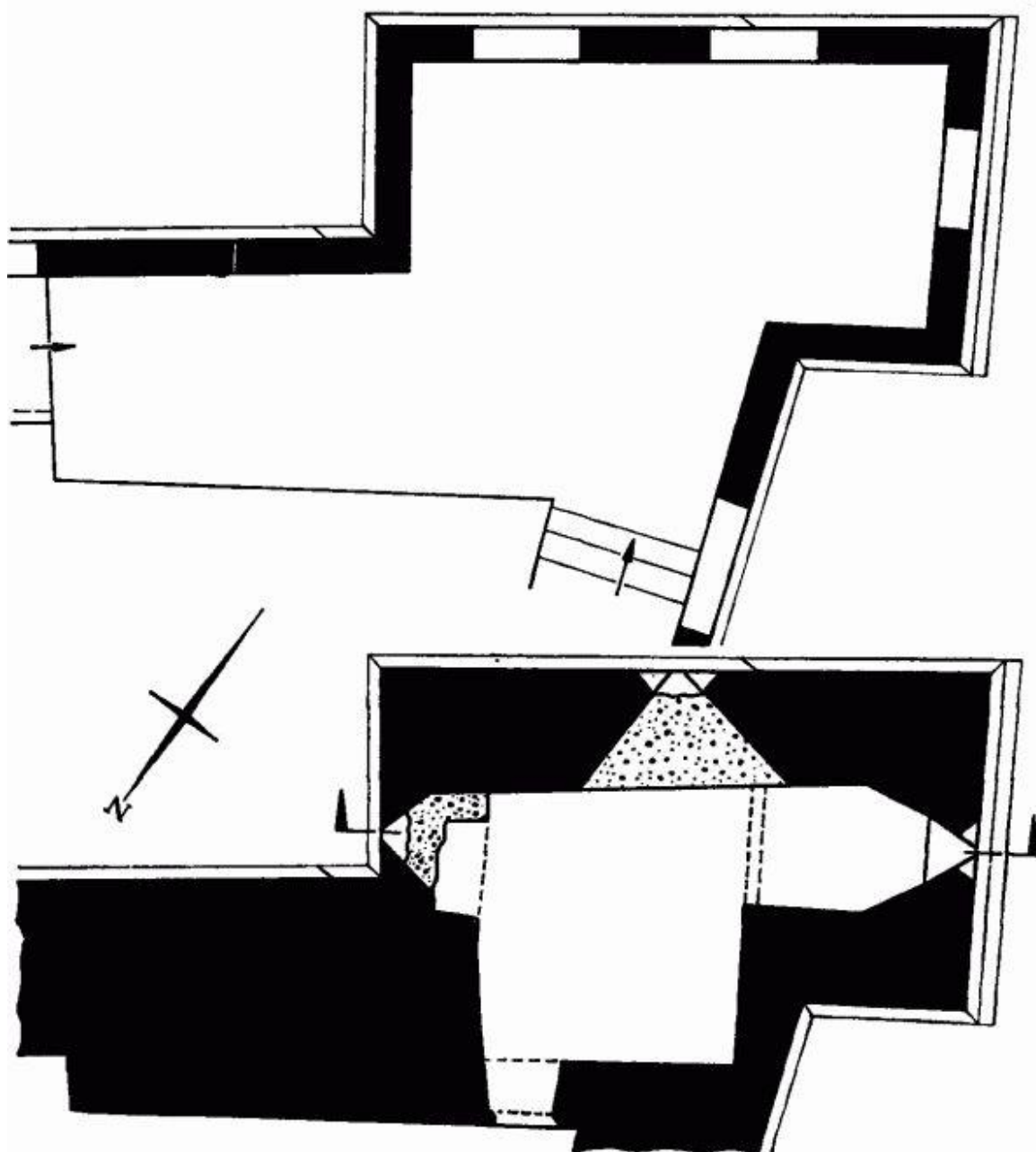
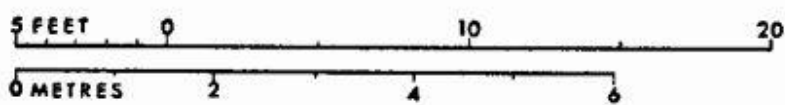
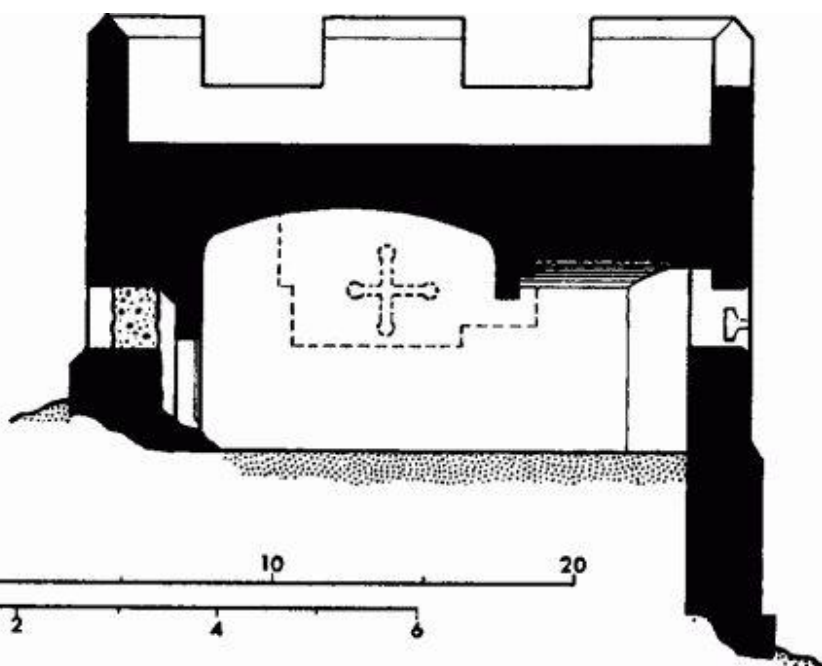
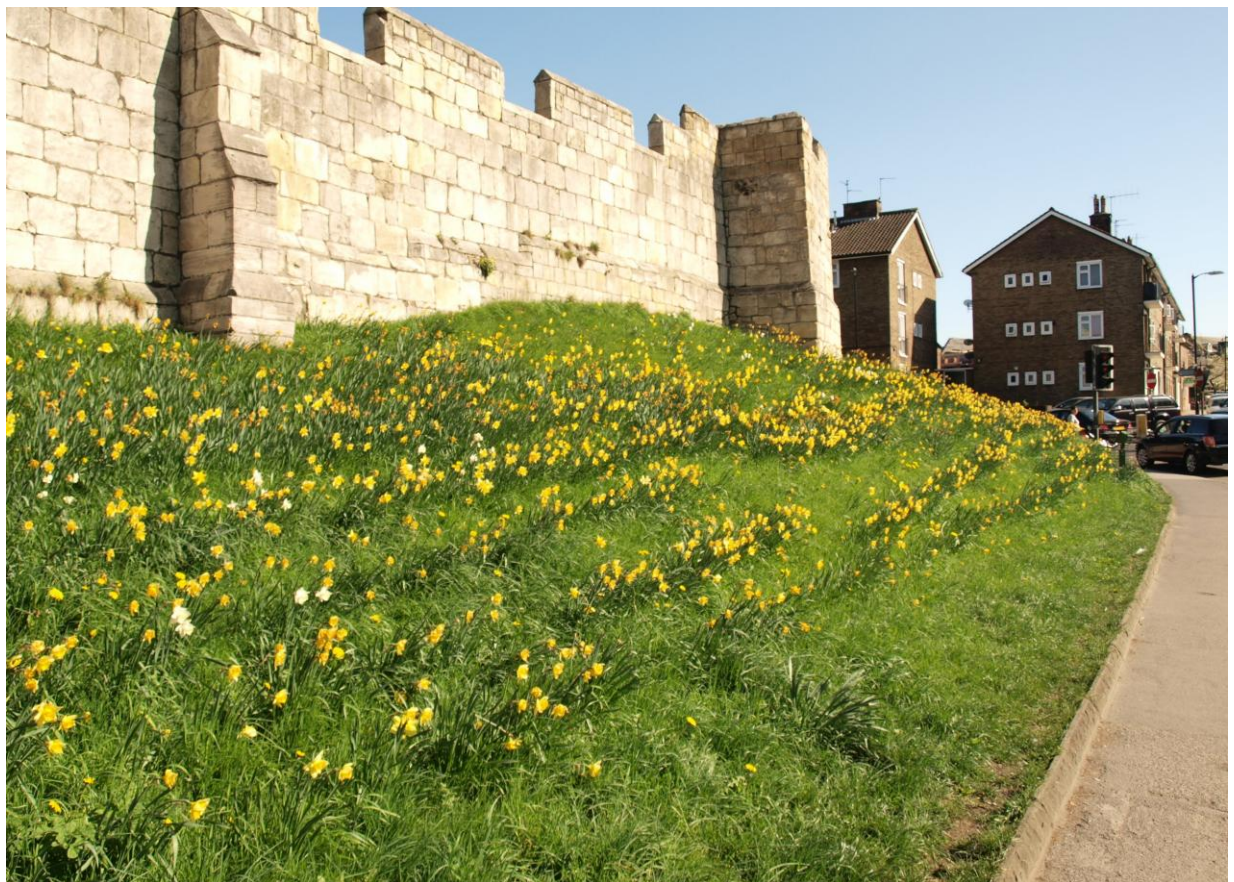


Plate 49 - Tower 39 from S. c. 1345 and later.

TOWER 39





Tower 39 in springtime with the daffodils (AF)